

Dual Wall Core Barrel (DWCB)

TSi Part #: 100-03051

About the DWCB

The TSi Dual Wall Core Barrel (DWCB) enables in situ coring sampling of sensitive formations, such as caliche and mixed, dense sediments. Its dual wall design allows the flushing of cuttings without disturbing the samples, resulting in fast, productive penetration rates while preserving the core sample integrity.

Benefits of Using the DWCB:

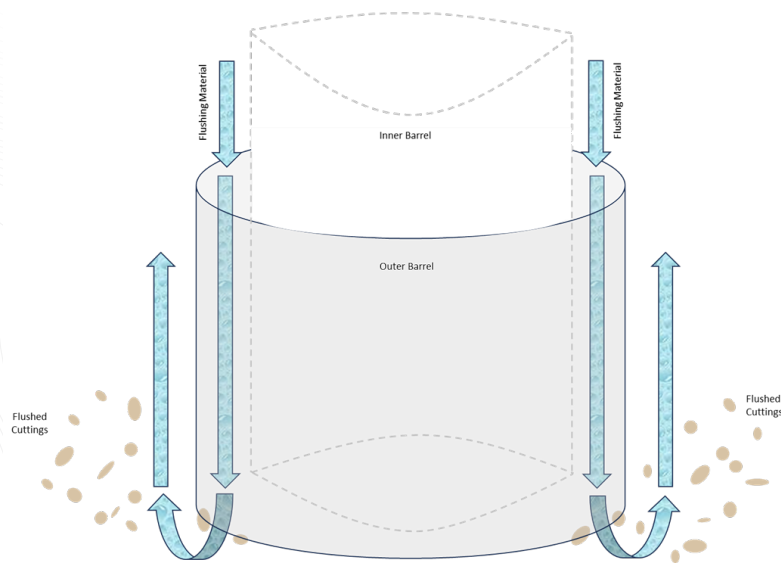
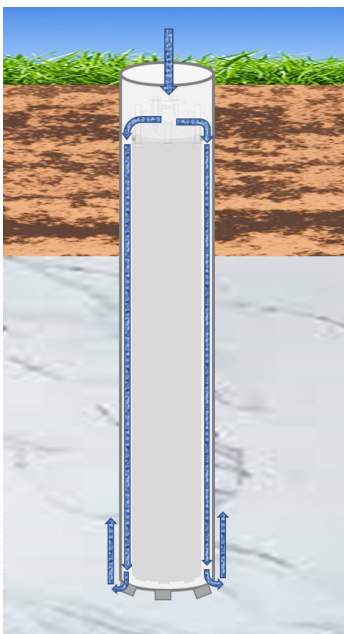
- **Superior Sampling:** Excellent sample quality in dense formations.
- **In-Situ Samples:** Produces in-situ samples (no washing away the core).
- **Flushing Cutting:** Flush material runs through the annular space, leaving the sample integrity intact.
- **Straight Holes:** Straight boreholes even in difficult lithology.
- **Dynamic Duo:** DWCB combined with casing prevents borehole collapse.
- **Compatible Tooling:** Works with standard TSi tooling.

Technical Specifications:

- Inner wall diameter 4.1" (104.14 mm)
- Outer wall diameter 4.75" (120.65 mm)
- Overall length 11' 6" (3.5 m)
- Collection tube area length 11' (3.4 m)

How the Dual Wall Core Barrel Works

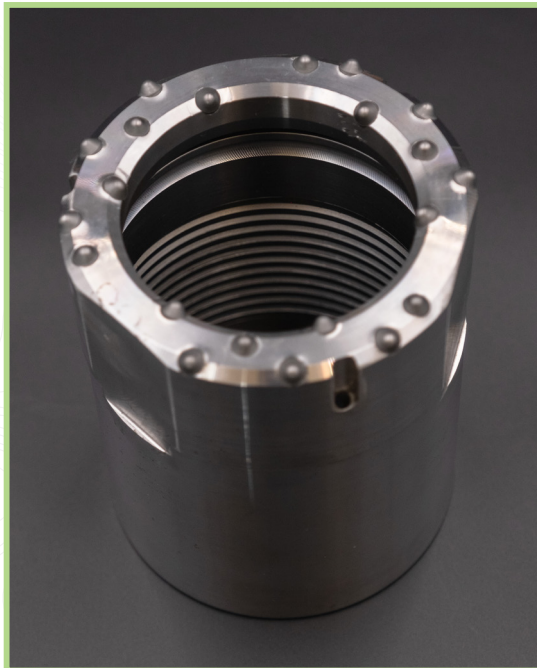
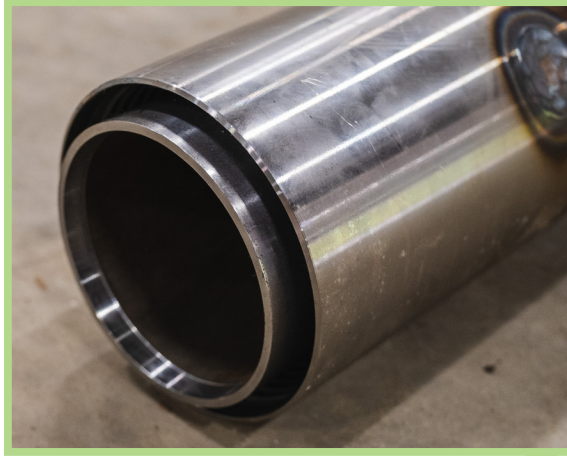
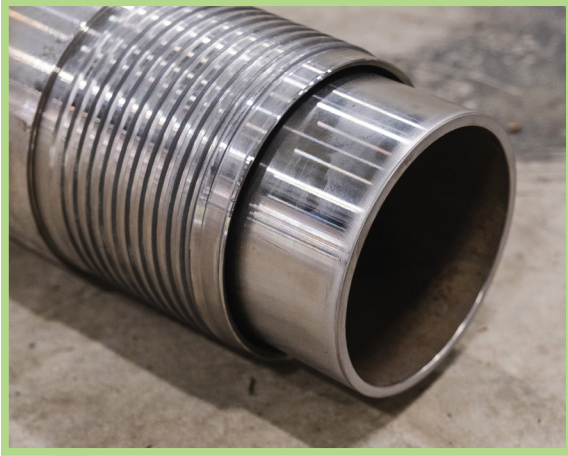
Flushing material (air or water) enters the core barrel adapter which directs flow to the bit face through the annulus between the outer and inner walls. No material contacts the soil core, which prevents damaging or flushing away the sample. A special vented adapter relieves pressure inside the DWCB as the soil core enters the barrel.



Face flushing with air or water moves drill cuttings away from the bit face.

Dual Wall Core Barrel (DWCB)

TSi Part #: 100-03051



SPECIALTY SONIC TOOLING